

**LAVORI DI MANUTENZIONE
STRAORDINARIA E MESSA IN SICUREZZA
DELLA CASA MUNICIPALE**

Planimetrie e infissi

Il Responsabile del Servizio Tecnico e Responsabile del progetto
Ing. Sara Vinci

Il Progettista
Ing. Sara Vinci

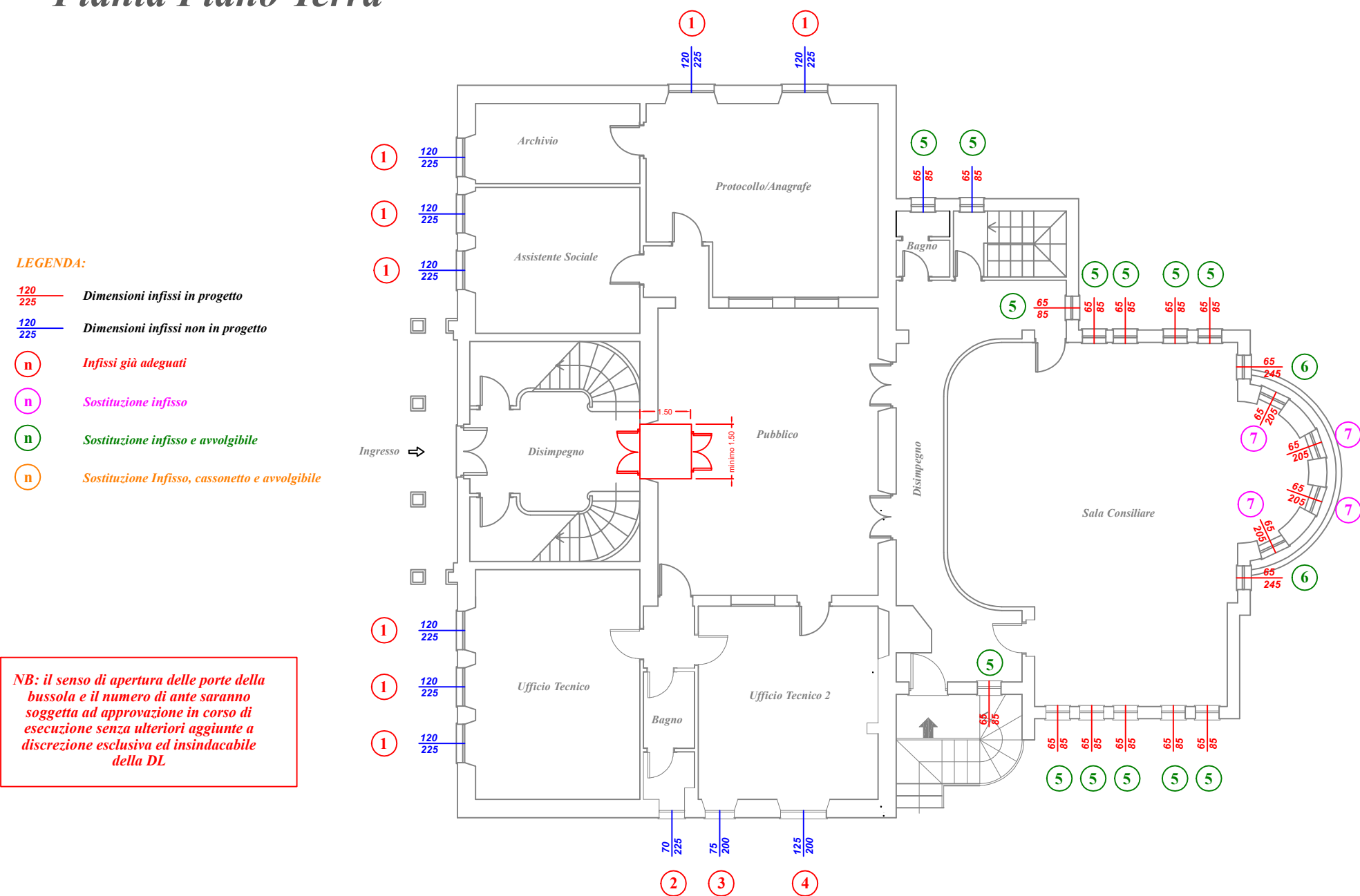
Il Sindaco
Sig. Rossano Zedda

Scale varie

Data: 07/2025

TAVOLA
B

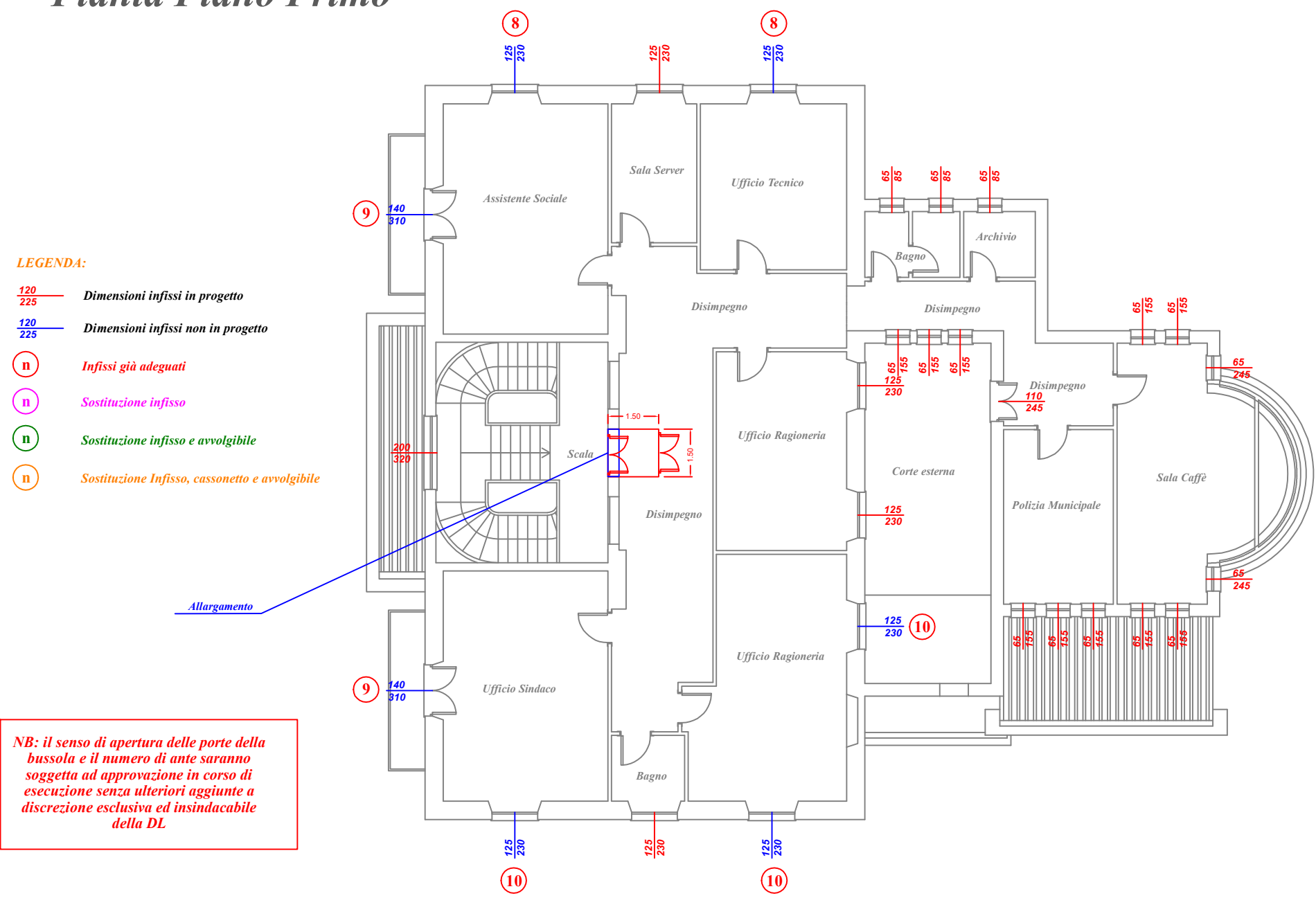
Pianta Piano Terra



Infissi

Scale 1: 0-100

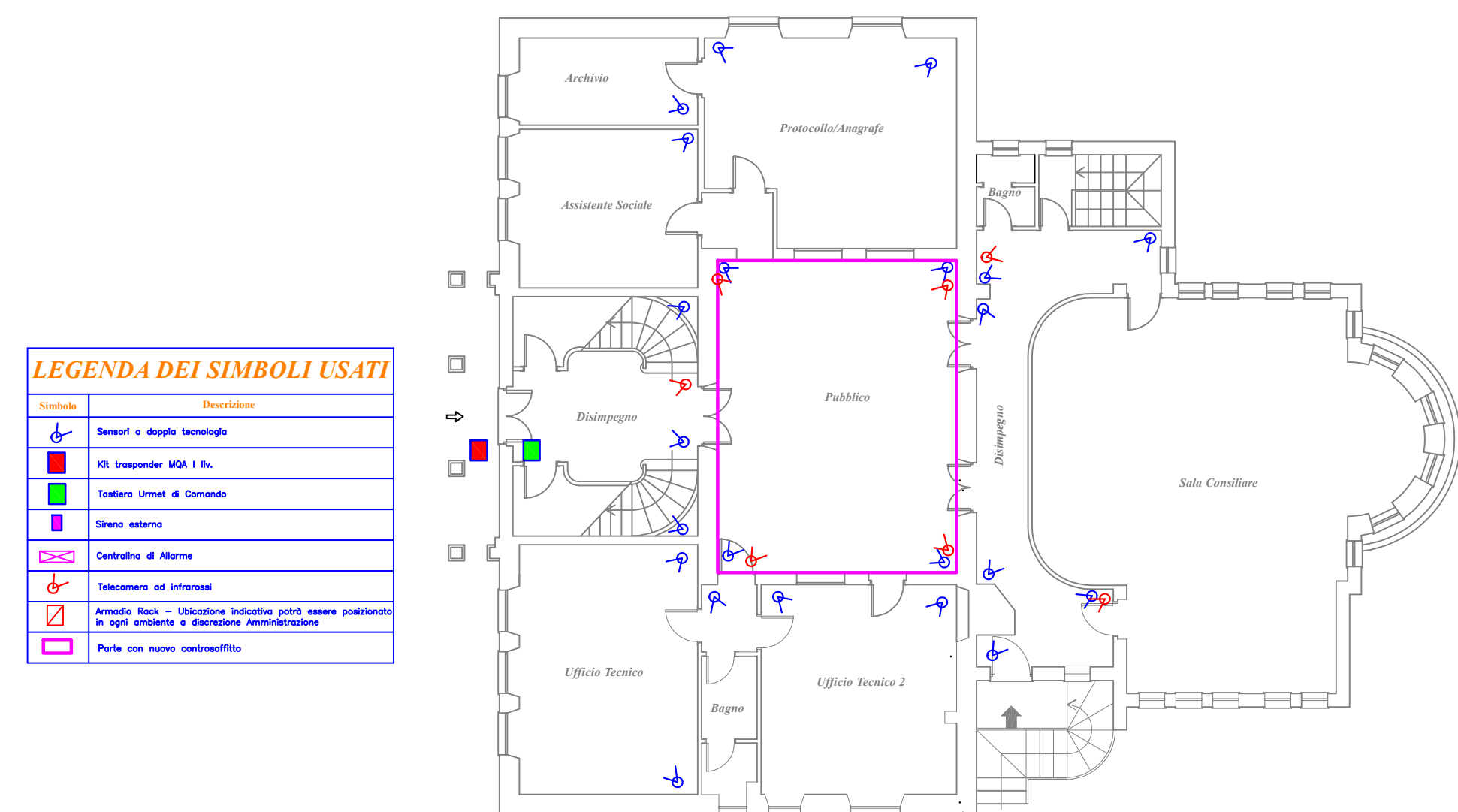
Pianta Piano Primo



Zona flessilavori

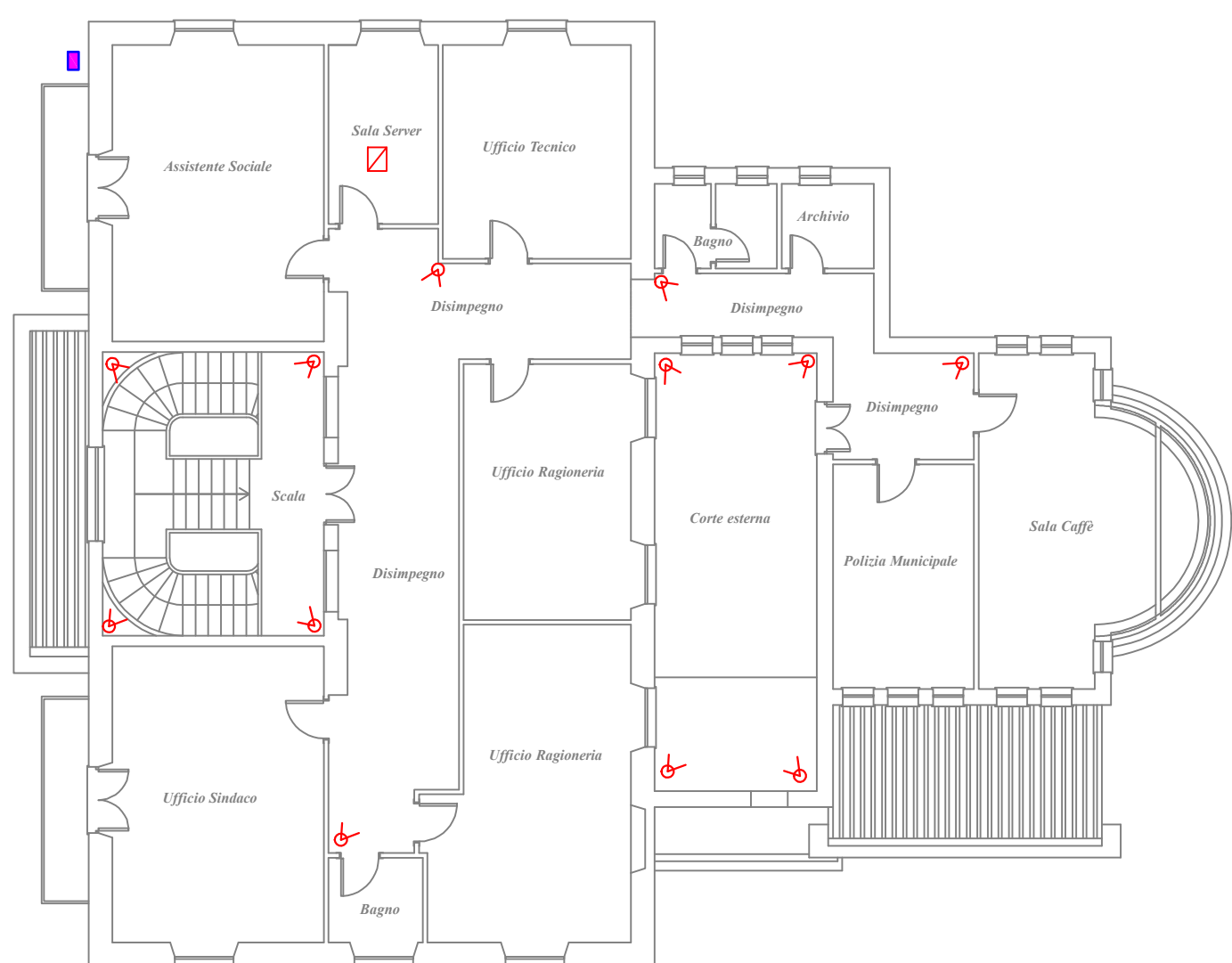
Scale 1:100

Pianta Piano Terra



Allarme e videosorveglianza

Pianta Piano Primo



Allarme e videosorveglianza

Scale 1:100